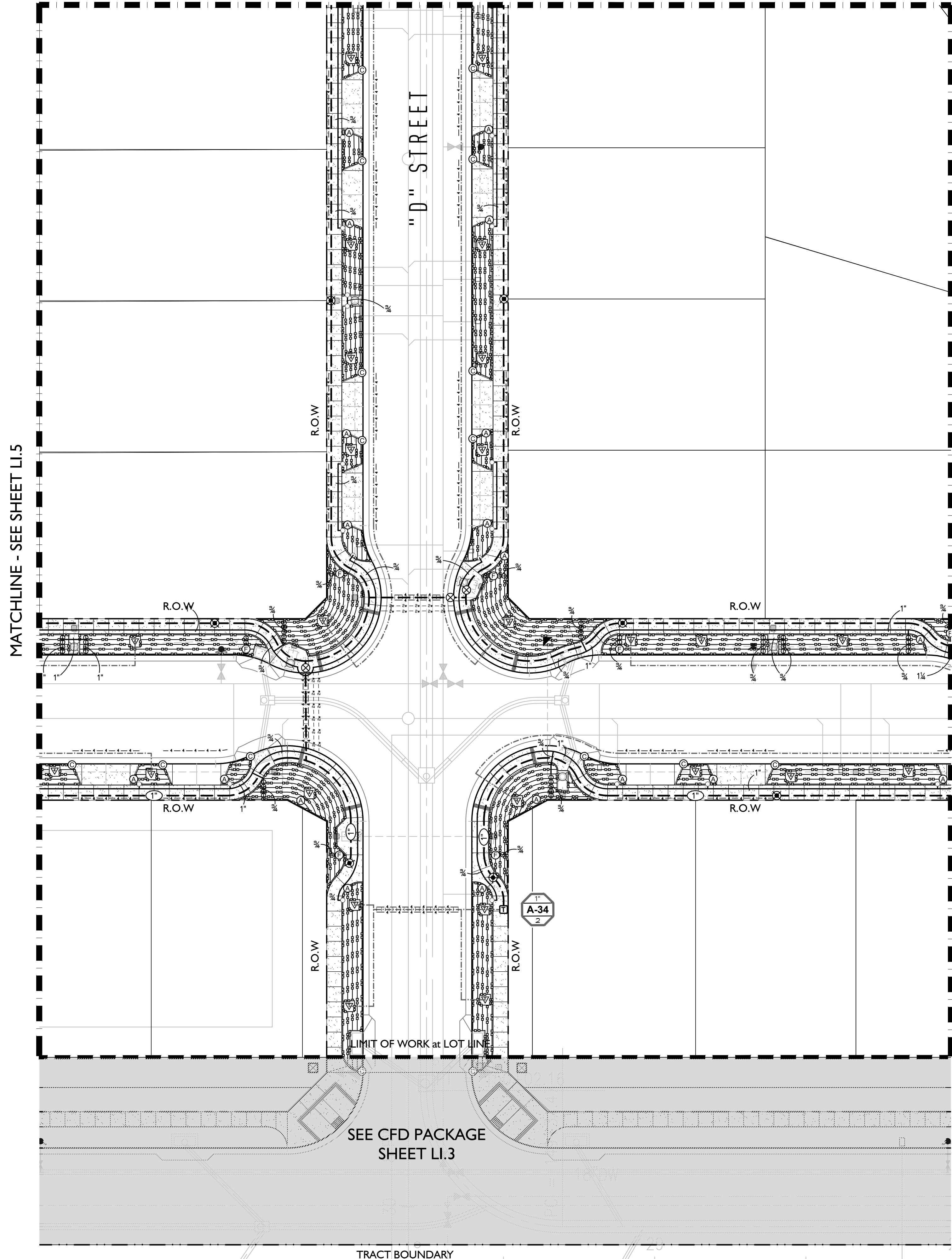


MATCHLINE - SEE SHEET LI.3



MATCHLINE - SEE SHEET LI.5

MATCHLINE - SEE SHEET LI.7

IRRIGATION LEGEND

UNDERGROUND TREE BUBBLERS

RAIN BIRD SYMBOL	RWS-B-C-1401-P w/ RWS SOCK & PURPLE GRATE DESCRIPTION	BUBBLER NOZZLE	GPM	REMARKS	20-90 PSI DETAIL
▽	PRE-ASSEMBLED DEEP ROOT WATERING SYSTEM	1401	0.25 (each)	EACH SYMBOL REPRESENTS 1 TREE & 2 'RWS' SYSTEMS INSTALL 2 'RWS' SYSTEMS FOR EACH TREE SYMBOL	F-53

RAIN BIRD SYMBOL	RWS-B-C-1401-P w/ RWS SOCK & PURPLE GRATE DESCRIPTION	BUBBLER ** TORO **	GPH	REMARKS	5-50 PSI DETAIL
▽	PRE-ASSEMBLED DEEP ROOT WATERING SYSTEM	LF-40-PC	4.0 (each)	EACH SYMBOL REPRESENTS 1 TREE & 2 'RWS' SYSTEMS INSTALL 2 'RWS' SYSTEMS FOR EACH TREE SYMBOL	F-53

** IMPORTANT: THE CONTRACTOR SHALL REMOVE ALL RAIN BIRD #1401 0.25 GPM BUBBLERS IN THE DEEP ROOT WATERING SYSTEMS AND REPLACE WITH TORO #LF-40PC 4.0 GPH BUBBLERS PRIOR TO INSTALLATION.

RAIN BIRD	5000 Plus series ROTOR	MODEL NO.	RADIUS	Q	GPM	MPR-25 (RED) MATCHED PRECIPITATION RATE NOZZLES	35 PSI DETAIL
6" POP-LP	5006+PC-SAM-NP		18'-24'	⊙	0.9	18'-24'	⊙

RAIN BIRD	5000 Plus series ROTOR	MODEL NO.	RADIUS	Q	GPM	MPR-30 (GREEN) MATCHED PRECIPITATION RATE NOZZLES	35 PSI DETAIL
8" POP-LP	5006+PC-SAM-NP		23'-30'	⊙	1.2	23'-30'	⊙

DRIP IRRIGATION

SYMBOL	MFR.	MODEL NUMBER	COLOR	DESCRIPTION	EMITTERS	GPH.	GPM.	PSI.	DETAIL
—	RAIN BIRD	XFSP-04-12	PURPLE	XFS SUB-SURFACE PRESSURE COMP. DRIPLINE (FACTORY PRE-ASSEMBLED)	12" O.C.	0.42 GPH.	0.70 / 100'	10 - 60	H-11, H-60
—	RAIN BIRD	XFSP-08-18	PURPLE	XFS SUB-SURFACE PRESSURE COMP. DRIPLINE (FACTORY PRE-ASSEMBLED)	18" O.C.	0.90 GPH.	1.02 / 100'	10 - 60	H-1, H-11
—	RAIN BIRD	XFD	BROWN	XF SERIES BLANK TUBING					H-21
—	RAIN BIRD	XFD-TFA-075		DRIPLINE ADAPTER TEE (3/4" FPT x DRIPLINE)					H-2
—	RAIN BIRD	XFD-TFA-075		DRIPLINE ADAPTER TEE (1/2" FPT x DRIPLINE)					H-12, 13, 60
(no symbol)	RAIN BIRD	XGF75 / XGF10		OF DRIPLINE HEADER (3/4" x 1")					
⊙	HUNTER	PLD-CAP		MANUAL FLUSH CAP (DRIPLINE x 1/2" MIPT w/ CAP)					H-3
⊙	(APPROVED) KING BROS.	(BRASS) WLT-S		HOSE END CAP (3/4" FHT) FOR FLUSH VALVE w/ SCH. 40 PVC BALL VALVE (SLIP)					H-15
⊙	RAIN BIRD	ARV050		AIR VACUUM RELIEF VALVE (1/2" MIPT)					H-20, H-21
(no symbol)	RAIN BIRD	OPERIND		POP-UP OPERATION INDICATOR					

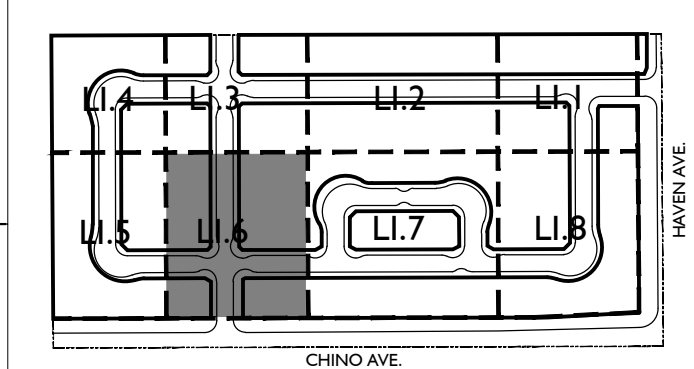
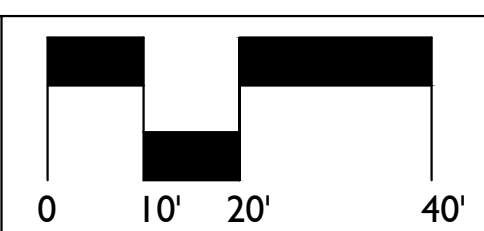
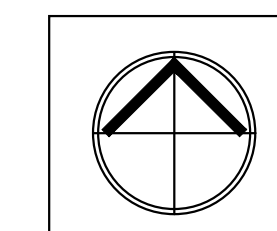
DISTRIBUTION & CONTROL EQUIPMENT

SYMBOL	MFR.	MODEL NUMBER	DESCRIPTION	REMARKS	DETAIL
⊠	HUNTER	IC-4200-PED-SS	I-CORE CONTROLLER w/ STAINLESS STEEL PEDESTAL	42 STA. (w/ 6 ICM-600 MODULES) & OPTIONS BELOW: INSTALL ONE FOR EACH CONTROLLER PER MFR.	B-10
(no symbol)	HUNTER	SOLARSYNCSN	SOLAR-SYNC SENSOR	INSTALL ONE FOR EACH CONTROLLER PER MFR.	
(no symbol)	STRONG BOX	SRSE	SOLAR SYNC COVER	INSTALL ONE FOR EACH SOLAR-SYNC	
⊠	EATON SUPERIOR CREATIVE SENSOR TECHNOLOGY	72 500XLG 3200 FSI-T10-000	BRONZE BASKET STRAINER (FLANGED) PRV (25-75 PSI RANGE) w/ 0-100 PSI GAUGE ELECTRIC MASTER VALVE (NORMALLY CLOSED) FLOW SENSOR in SCH. 40 PVC TEE (SLIP x SLIP)	1-1/2" w/ 60 MESH STAINLESS STEEL SCREEN 1-1/2" SETTINGS NOTED 1-1/2" w/ FLOW CONTROL 1", 240 PSI MAX., 0.86-52 GPM. FLOW INSTALL IN SEPARATE 12"x18" VALVE BOX; MAIN LINE SHALL BE 1" DIA. FOR 10" UPSTREAM & 5" DOWNSTREAM OF TEE	C-12
⊙	NIBCO	T-580	BRONZE ISOLATION BALL VALVE (THREADED)	LINE SIZE, TO 3" MAX.	C-12, D-1
⊠	RAIN BIRD	PESB-R	ELECTRIC CONTROL VALVE, FOR RECYCLED WATER	SIZES NOTED, w/ FLOW CONTROL	A-21, E-10
⊠	RAIN BIRD	XCZ-075-PRF	DRIP ZONE CONTROL VALVE w/ PR FILTER	3/4" w/ FLOW CONTROL, 0.2 - 5 GPM., 30 PSI., 200 MESH	A-21, E-13
⊠	RAIN BIRD	XCZ-100-PRB-COM	DRIP ZONE CONTROL VALVE w/ PR FILTER	1", w/ FLOW CONTROL, 3 - 20 GPM., 40 PSI., 200 MESH	A-21, E-13
⊠	RAIN BIRD	XCZ-150-PRB-COM	DRIP ZONE CONTROL VALVE w/ PR FILTER	1-1/2", w/ FLOW CONTROL, 15 - 40 GPM., 40 PSI., 200 MESH	A-21, E-13
⊠	HUNTER	HQ-44-LRC-AW-R	QUICK-COUPLING VALVE w/ PURPLE LOCKING COVER	1", w/ ACME THREADS, FOR RECYCLED WATER	D-10

SYMBOL	MFR.	MODEL NUMBER	DESCRIPTION	REMARKS	DETAIL
—	(APPROVED)	SCH. 40 PVC (PURPLE)	PRESSURE MAIN LINE (RECYCLED WATER SOURCE):	FOR UNDERGROUND INSTALLATION	A-1
—	(APPROVED)	CL. 315 PVC (PURPLE)	1-1/2" DIAMETER AND SMALLER	SIZES NOTED	
—	(APPROVED)	CL. 200 PVC (PURPLE)	2" DIAMETER TO 3" DIAMETER	SIZES NOTED	
—	(APPROVED)	CL. 200 PVC (PURPLE)	NON-PRESSURE LATERAL LINE (RECYCLED SOURCE)	FOR UNDERGROUND INSTALLATION; SIZES NOTED (3/4" MIN.)	A-1
—	(APPROVED)	CL. 200 PVC (PURPLE)	NON-PRESSURE LATERAL LINE (RECYCLED SOURCE)	FOR TREE BUBBLER ZONES; 3/4" UNLESS NOTED OTHERWISE	A-1
—	(APPROVED)	SCH. 40 PVC	MAIN LINE, LATERAL LINE, & CONTROL WIRE SLEEVE	ONE (1) PER DRIVEWAY @ 4" DIAMETER EACH	A-3, A-20
—	(APPROVED)	SCH. 40 PVC	MAIN LINE SLEEVE	DIAMETER AS NOTED IN THE SLEEVE SYMBOL ON THE PLAN	A-3
—	(APPROVED)	SCH. 40 PVC	LOW VOLTAGE CONTROL WIRE SLEEVE	DIAMETER AS NOTED IN THE SLEEVE SYMBOL ON THE PLAN	A-3, A-20
—	(APPROVED)	SCH. 40 PVC	LATERAL LINE SLEEVE	SIZE: TWO TIMES THE SIZE OF THE LINE BEING SLEEVED	A-3

SYMBOL	DESCRIPTION	REMARKS
⊠	WATER METER	RECYCLED WATER METER (BY OTHERS) (WATER METERS ARE INSTALLED UNDER SEPARATE CONTRACT PER THE STREET and/or WATER IMPROVEMENT PLANS)
⊠	POINT OF CONNECTION (P.O.C.) FOR IRRIGATION SYSTEM	CONNECT TO CUSTOMER SERVICE SHUT-OFF VALVE (INSTALLED BY OTHERS) ON OUTLET OF WATER METER. METER LOCATIONS ARE APPROXIMATE -- IRRIGATION CONTRACTOR SHALL VERIFY IN THE FIELD.
⊠	INDICATES CONTROL VALVE SIZE	ALL VALVE BOXES FOR DISTRIBUTION & CONTROL EQUIPMENT SHALL HAVE PURPLE LIDS.
⊠	INDICATES CONTROLLER STATION NUMBER	
⊠	INDICATES FLOW IN GALLONS PER MINUTE	

WHENEVER ANY ITEM OF "DISTRIBUTION & CONTROL EQUIPMENT" IS SIZED SMALLER THAN THE MAIN LINE OR LATERAL LINE PIPING ON WHICH IT IS PLACED, THE REDUCTION IN PIPE SIZE SHALL ONLY OCCUR AT THE THREADED FITTING WHICH ADAPTS THE PIPE TO THE PIECE OF EQUIPMENT.



KEY MAP N.T.S.

Issued For:

08/26/16	1st CITY SUBMITTAL
----------	--------------------

Revisions:

△	
---	--

507 30th St.
Newport Beach, CA 92663
949.675.9964
mjs-la.com

PROJECT:
WEST HAVEN
TR 18026 (HOA)
ONTARIO, CA

CLIENT:
STRATHAM
HOMES
2210 DUPONT DRIVE
SUITE 300
IRVINE, CA 92612
PH: 949.833.1554



Job No.: -
Drawn By: WRD
Checked By: MS
Plan Date: AUGUST 26, 2016
Scale:

Title:
IRRIGATION
PLAN

Sheet No.:
LI.6

Plan Status:
1st CITY SUBMITTAL

STRATHAM HOMES - WEST HAVEN TR 18026 - HOA - LANDSCAPE ARCHITECTURE